



DAQSTATION
DX Circular Display Model
DX200C

The DX Series of DAQSTATION display measurement data in real-time on a high resolution TFT color liquid crystal display. Data can be saved to 3.5-inch floppy disks, CompactFlash memory card, and Zip disk removable media. DAQSTATION include a standard Ethernet adapter that allows immediate connection to a 10BASE-T network. Optional serial interfaces include RS-232 or RS-422-A/485 with Modbus protocol support. Either interface allows data file transfer or real time data acquisition with a PC. The DX Series also has a wide range of display functions that let you optimize the monitoring controls for your application.



The ideal user interface: Easier to view and easier to use



Features

The DAQSTATION DX200C is a data acquisition station with networking and information processing capabilities that go beyond the standard concepts adopted for conventional circular recorders.

Networking capability

- The DX Series is standard equipped with a 10BASE-T Ethernet adapter for easy connection to an existing LAN or WAN.
- It offers a variety of functions such as sending messages by e-mail, remote monitoring through a web browser, and transferring files using FTP.
- Networking further expands the range of application for DAQSTATION, including monitoring and data backup capability.

A wide variety of display options

- Each models in the DX Series is equipped with high-resolution, wide-angle TFT color liquid crystal displays for unparalleled ease of viewing. The DX200C has a 10.4-inch display.
- A variety of display options are provided, including circular trend display, T-Y trend display, bar graph display, numeric display, overview display, and historical display.
- Circular display cycles can be selected from 1, 2, 6, 8, 12, 16, 24, 48 (hours), 1, 2, and 4 (weeks).

Storage options for greater flexibility

- In addition to 1.44MB 3.5-inch floppy disks, CompactFlash memory card and Zip disks (100 MB) can be used as removable storage media.
- Compatibility with a variety of formats provides flexibility for tasks such as creating data files at specified times and collecting and filing data continuously over a long period.
- The DX Series does not require ink or paper for recording measurements-an important factor in improving efficiency and reduce TCO.

Display and controls



1 DX status display area

This area graphically presents the DX operating status.

2 Trend display area

This area displays trend lines, together with channel numbers and user selectable messages. Background color (white or black) is also user selectable.

3 Digital display area

This area displays digital measurement values, together with channel or tag numbers, industrial units, and alarm statuses for each channel.

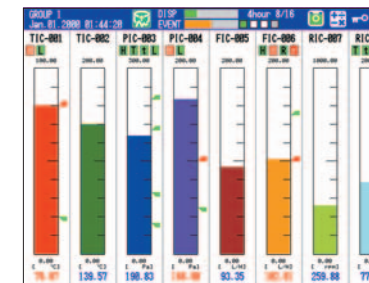
4 Navigation keys

The Navigation keys are used for functions such as switching display modes, primarily during normal operations (in operation mode). When entering settings, the Navigation keys are used to move the cursor.

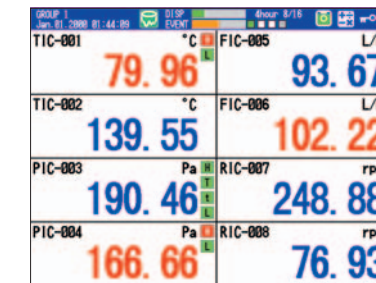
5 Key panel

The key panel contains function keys, memory sampling START/STOP keys, and a numerical keypad. These keys are primarily used to perform various actions related to data recording, and to enter settings in the DX recorder.

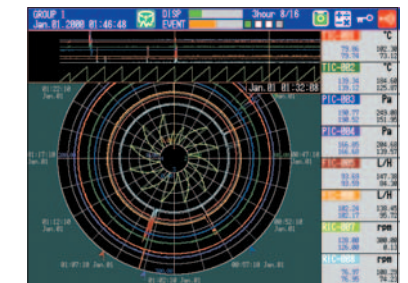
Other display modes



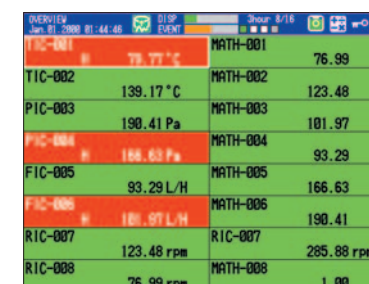
Bar graph display



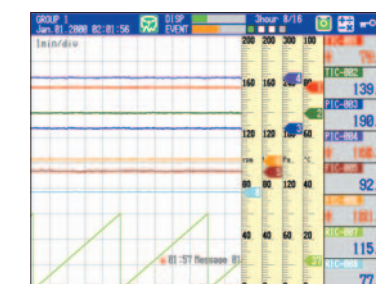
Large-font numeric display



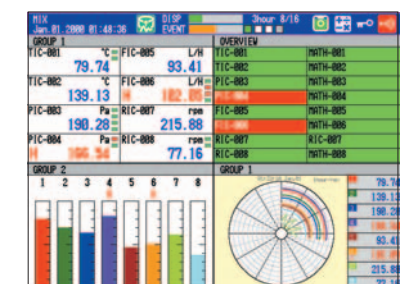
Historical trend display



Overview screen



T-Y trend screen

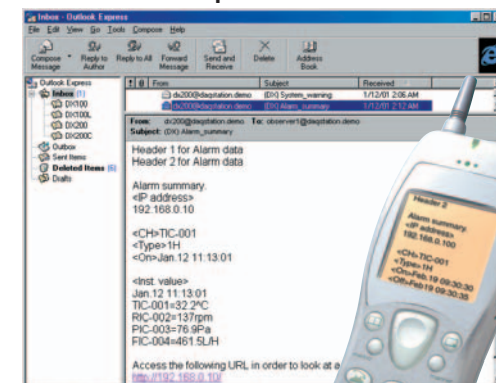


4 screen display

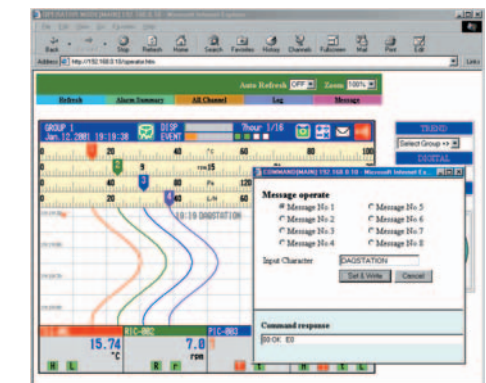
Networking

The DX Series has a built-in 10BASE-T Ethernet adapter for easy connection to an existing network. Even if you don't have a network now, this is a nice feature to have in case you build one in the future.

- Email notification of DX alarm data and instantaneous values at preset times



- Displaying the DX screen on an Internet browser



High reliability

Protecting data during a power interruption

The DX Series uses flash memory as internal memory for storing measurement data. Flash memory is a type of nonvolatile memory that does not require a battery backup. Power interruptions will not cause it to lose stored data.

Dust-proof and water-proof front panel

The front panel has a dust-proof, water-proof design that is compliant with the IEC529-IP65 and NEMA No. 250 TYPE4 standards. Compliance with IP65 means that the front panel has protection against dust or being sprayed with a jet stream.

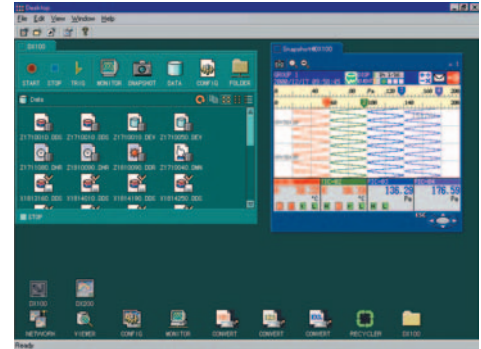
Compliance with safety standards and EMC standards



Application software

DAQEXPLORER (Windows 98/Me/NT4.0/2000/XP)

DAQEXPLORER is a powerful DAQSTATION software package that supplements the DX standard software functions with networks functions such as DAQ Desktop and Remote Monitor. DAQEXPLORER lets you take advantage of DX Ethernet network functions, including file transfer and data monitoring, through a user-friendly graphical interface.



Models

Model code	Suffix code	Optional code	Description
DX204C			DAQSTATION DX200C (4 ch)
DX208C			DAQSTATION DX200C (8 ch)
External memory	-1		FDD
	-2		Zip (with medium)
	-3		CompactFlash memory card (CF+Adapter)
Display language	-2		English/Germany/French, deg F & Summer/winter time (with English DX standard software)
Options	/AR1		Alarm output 2 points/Remote control *1 *2
	/AR2		Alarm output 4 points/Remote control *1 *2
	/A3		6 alarm outputs *1
	/A4		12 alarm outputs *1
	/A5		24 alarm outputs *1 *3
	/BT1		Batch function
	/C2		RS-232 interface (with Modbus) *4 *5
	/C3		RS-422-A/485 interface (with Modbus) *4 *5
	/CF1		FOUNDATION Fieldbus *4 *6
	/D5		VGA video output
	/F1		Fail/memory end detection and output *3
	/H2		Clamped input terminal
	/H5 ()		Desktop type *7
	/M1		Mathematical function (with report creation capability)
	/N1		Cu10, Cu25 RTD input/3 legs isolated RTD
/P1		24 V DC/AC power supply	
/R1		Remote control	
/TPS4		24 V DC output for transmitters (4 loops) *8	
/TPS8		24 V DC output for transmitters (8 loops) *8 *9	

*1 /AR1, /AR2, /A3, /A4, and /A5 cannot be specified together.

*2 If /AR1, or /AR2 is specified, /R1 can not be specified.

*3 If /F1 is specified, /A5 can not be specified.

*4 /C2, /C3, and /CF1 cannot be specified together.

*5 Specify /M1 when using Modbus master functions.

*6 If /CF1 is specified, /M1 must be specified.

*7 If /P1 is also specified, specify /H5. () power cord: See "GS 04L03A01-00E"

*8 /TPS4, /TPS8, and /A5 cannot be specified together.

*9 If /TPS8 is specified, /A4 and /F1 cannot be specified together.

Application software

Model	Description	Operating System
DXA100-02	DAQSTANDARD	Windows 98/Me/NT4.0/2000/XP
WX104/CD1	DAQEXPLORER	Windows 98/Me/NT4.0/2000/XP
DXA310-021	DAQ-PharmBio	Windows 98/Me/NT4.0/2000/XP
DXA410-02	DAQOPC (Basic)	Windows NT4.0/2000
DXA410-04	DAQOPC (Advanced)	Windows NT4.0/2000
WX101/CD1	DAQLOGGER (1600 channels)	Windows 98/NT4.0/2000/XP
WX81/CD1	DAQLOGGER Client (1600 channels)	Windows 98/NT4.0/2000/XP

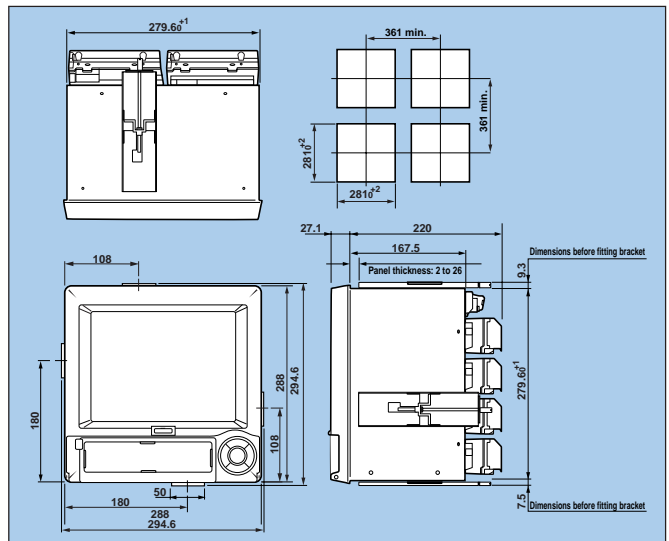
DAQSTATION is a registered trademark of Yokogawa Electric Corporation.
 "Field Content on the Web" is an English equivalent of the Japanese trademark registered in Japan by Yokogawa Electric Corporation.
 Microsoft, MS, and Windows are registered trademarks or trademarks of Microsoft Corporation.
 Lotus and 1-2-3 are registered trademarks of Lotus Development Corporation.
 MMX and Pentium are registered trademarks of Intel Corporation.
 Ethernet is a registered trademark of Xerox Corporation.
 Modbus is a registered trademark of AEG Schneider Automation Inc.
 FOUNDATION Fieldbus and the logo of Fieldbus Foundation are registered trademarks of the Fieldbus Foundation.
 Zip and the logos are registered trademarks or trademarks of Iomega Corporation.
 Other company names and product names appearing in this document are registered trademarks or trademarks of their respective holders.

Accessories

Optional accessories

Product	Model (part number)	Specification	
Shunt resistor	For screw terminal (standard)	415920	250 Ω ±0.1%
		415921	100 Ω ±0.1%
		415922	10 Ω ±0.1%
	For clamped terminal (/H2)	438920	250 Ω ±0.1%
		438921	100 Ω ±0.1%
	438922	10 Ω ±0.1%	
3.5-inch floppy disks	705900	2HD (10 disks)	
Zip disk	A1053MP	100 MB	
CompactFlash memory card (CF+Adapter)	B9968NL	32 MB or more	
Fuse	A1423EF	250 V 1.25 A TL	
	A1463EF (/P1)	250 V 6.3 A TL	
Bracket	B9900BX	—	
Module handle	790581	—	

Dimensions



The DX200C requires two brackets for panel mounting. Use them to mount the DX at two points: upper and lower or right and left ends. The tolerance is ±3% (±0.3 mm for less than 10 mm) unless otherwise specified.

See "Bulletin 04L01A02-00E" for details on the DX100/DX200 functions and "GS 04L03A01E" for the specifications.

NOTICE

- Before operating the product, read the instruction manual thoroughly for proper and safe operation.
- If this product is for use with a system requiring safeguards that directly involve personnel safety, please contact the Yokogawa sales offices.



YOKOGAWA ELECTRIC CORPORATION

Network Solutions Sales Business Div./Phone: (81)-55-243-0309, Fax: (81)-55-243-0397

E-mail: tm@csv.yokogawa.co.jp

YOKOGAWA CORPORATION OF AMERICA

YOKOGAWA EUROPE B.V.

YOKOGAWA ENGINEERING ASIA PTE. LTD.

Phone: (1)-770-253-7000, Fax: (1)-770-251-2088

Phone: (31)-33-4641806, Fax: (31)-33-4641807

Phone: (65)-62419933, Fax: (65)-62412606

Subject to change without notice.

[Ed : 03/b] Copyright ©2000

Printed in Japan, 209(YG)